

SILENT

LINE: HEAVY DUTY

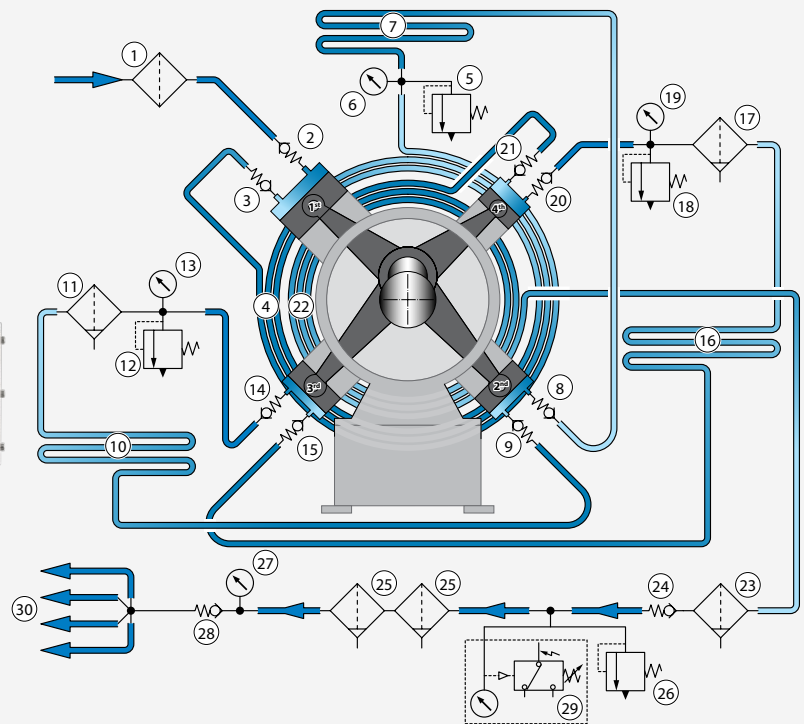
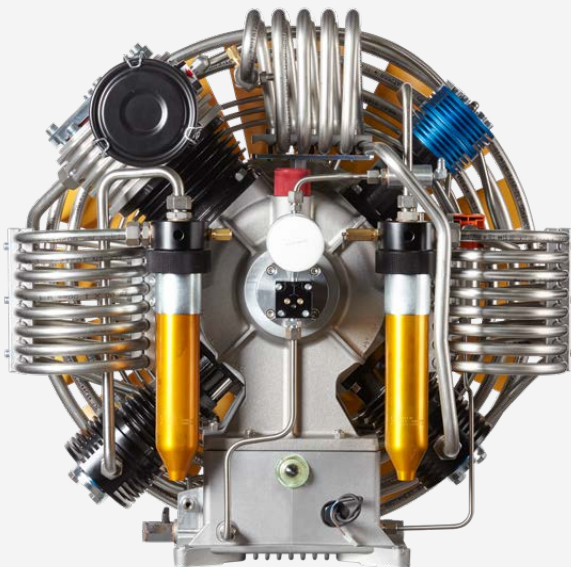


DESCRIPTION

The SILENT series represents soundproofing to perfection. It has been designed to meet the needs of very intensive situations and where large filling capacities are required. Equipped with 4 front filling connections for high pressure hoses (from 232 to 420 bar), a control panel and an electrical display. Each is equipped with a three-phase electric motor and powerful pumping units (MCH 22, MCH 30, MCH 36 and MCH 45 depending on the specific model). The structure, which has been specially designed to improve soundproofing, allows you to go below the 70 dB threshold when in action. In order to prolong the life of the filters external dryers, RF 500 and RF 1000, can be added. Optional extras include: electronic touch screen display, Presec for filter saturation control and remote filling panel.



MCH 22-30-36-45 PUMPING UNIT



- | | | |
|--------------------------------------|--------------------------------------|--|
| 1 Intake filter | 11 Condensate separator | 21 Outlet valve 4th stage |
| 2 Intake valve 1st stage | 12 Safety valve 2nd stage | 22 Final cooling pipe |
| 3 Outlet valve 1st stage | 13 Pressure gauge 2nd stage | 23 Condensate separator |
| 4 Cooling pipe 1st-2nd stage | 14 Intake valve 3rd stage | 24 Non return valve |
| 5 Safety valve 1st stage | 15 Outlet valve 3rd stage | 25 Active carbon air filter/molecular sieve |
| 6 Pressure gauge 1st stage | 16 Cooling pipe 3rd-4th stage | 26 Safety valve |
| 7 Cooling pipe 1st-2nd stage | 17 Condensate separator | 27 Pressure gauge 4th stage |
| 8 Intake valve 2nd stage | 18 Safety valve 3rd stage | 28 Pressure maintenance valve |
| 9 Outlet valve 2nd stage | 19 Pressure gauge 3rd stage | 29 Pressure switch |
| 10 Cooling pipe 2nd-3rd stage | 20 Intake valve 4th stage | 30 Flex hoses |

TECHNICAL DATA

| | MCH 22 | MCH 30 | MCH 36 | MCH 45 |
|---------------------------|--|--|--|--|
| DRIVEN BY | THREE-PHASE ELECTRIC MOTOR | THREE-PHASE ELECTRIC MOTOR | THREE-PHASE ELECTRIC MOTOR | THREE-PHASE ELECTRIC MOTOR |
| ENGINE POWER | 7.5 kW - 10 Hp | 9 kW - 12.5 Hp | 11 kW - 15 Hp | 15 kW - 20 Hp |
| CHARGING RATE | 450 l/min - 27 m³/h 15.9 CFM FAD | 550 l/min - 33 m³/h 19.4 CFM FAD | 650 l/min - 39 m³/h 22.9 CFM FAD | 750 l/min - 45 m³/h 26.9 CFM FAD |
| FILLING TIME* | 5 min. | 4 min. | 3 min. | 2,5 min. |
| WORKING PRESSURE | 232 - 330 - 420 bar 3365 - 4786 - 6091 psig | 232 - 330 - 420 bar 3365 - 4786 - 6091 psig | 232 - 330 - 420 bar 3365 - 4786 - 6091 psig | 232 - 330 - 420 bar 3365 - 4786 - 6091 psig |
| NET WEIGHT APPROX. | 445 kg - 981 lb | 455 kg - 1003 lb | 455 kg - 1003 lb | 455 kg - 1003 lb |
| NOISE | 70 dB | 70 dB | 70 dB | 70 dB |

*Filling time cylinder 10 l-0/200 bar (measured by filling cylinder from 0 to 200 bar ±5%)

STANDARD



DRV 232 bar - 3365 psig
DRV 300 bar - 4351 psig
2 valves DRV (Pag. 59)



Filling hoses
2 filling hoses 1.2 m - 3.9 ft length



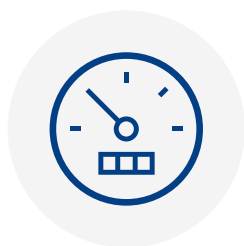
Automatic condensate drain



Pressure gauges
interstage control



Double hyperfilter filtration
PED certificated
(Pag. 61)



Pressure switch
auto shut off



Thermostat
Cabin temperature
thermostat/auto shut off



Phase controller
that prohibits reverse rotation



Oil level
switch/auto shut off

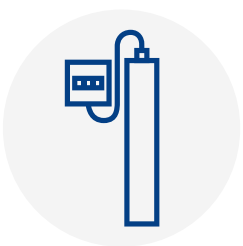


Oil pump

OPTIONAL



Touch screen
display



Presec
visual filtration saturation indicator
(Pag. 49)



Dryer
(Pag. 48)



Remote filling panels
(Pag. 58)

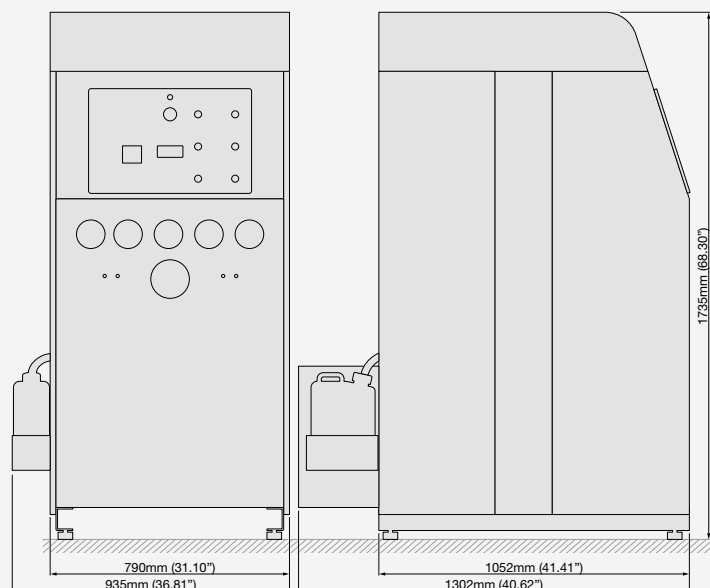


Filling hoses
length: 1.5 - 2 - 3 - 4 - 5 - 8 - 10 m
4.9 - 6.5 - 9.8 - 13.1 - 16.4 - 26.2 - 32.8 ft

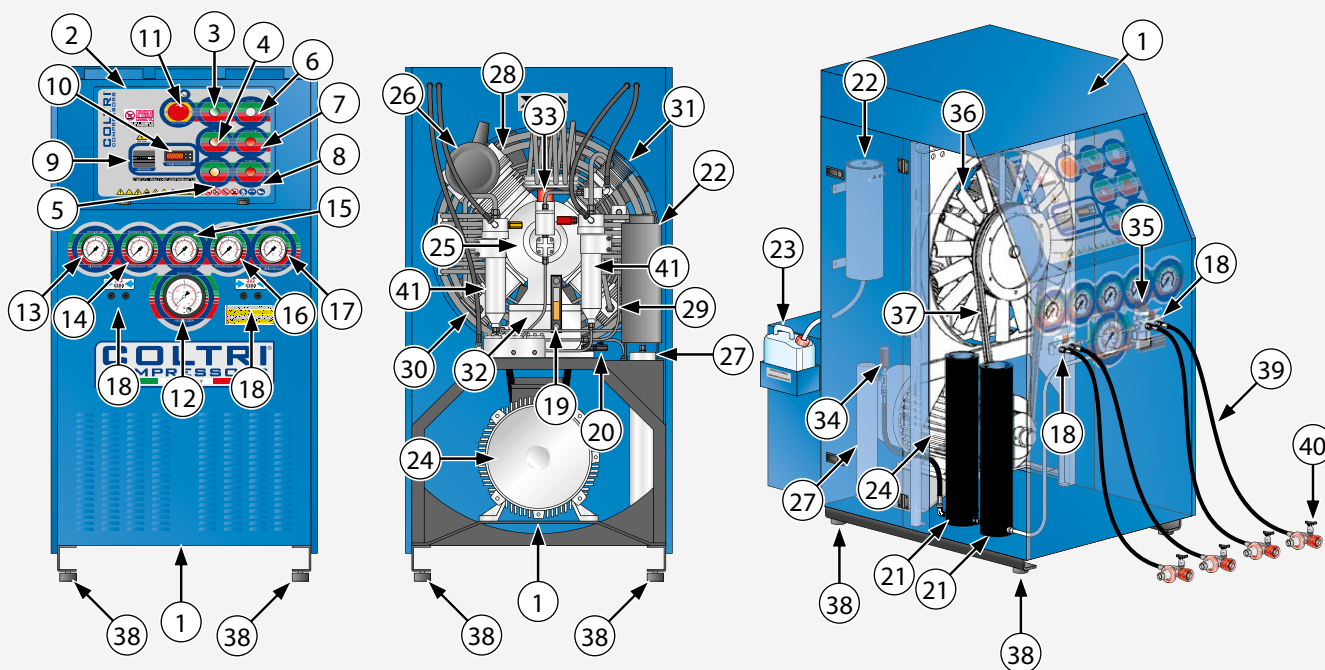
SAM

SAM Multigas

DIMENSIONS



MACHINE PARTS



- | | | | | | |
|----|--|----|---|----|-----------------------|
| 1 | Frame | 15 | 2nd stage pressure gauge | 28 | 1st stage |
| 2 | Control pannel | 16 | 3rd stage pressure gauge | 29 | 2nd stage |
| 3 | ON pushbutton | 17 | 4th stage pressure gauge/ working pressure | 30 | 3rd stage |
| 4 | Stop pushbutton | 18 | Refill hoses connection | 31 | 4th stage |
| 5 | Condensate discharge pushbutton | 19 | Oil level | 32 | Monobloc |
| 6 | Power indicator light | 20 | Oil discharge valves | 33 | Oil filler plug |
| 7 | Direction of rotation indicator light | 21 | Purifier filter | 34 | Safety valve |
| 8 | Oil level warning light | 22 | Condensate collection container | 35 | Maintenance valve |
| 9 | Hour counter | 23 | Condensate collection can | 36 | Cooling fan |
| 10 | Cabinet interior / cooling air temperature | 24 | Motor | 37 | Belt |
| 11 | Emergency pushbutton | 25 | Compressor | 38 | Anti-vibration device |
| 12 | Automatic shutdown pressure switch | 26 | Air filter | 39 | Refill hose |
| 13 | Oil pressure gauge | 27 | Final condensate separator | 40 | Refill valves |
| 14 | 1st stage pressure gauge | | | 41 | Condensate separator |

OPEN

LINE: HEAVY DUTY



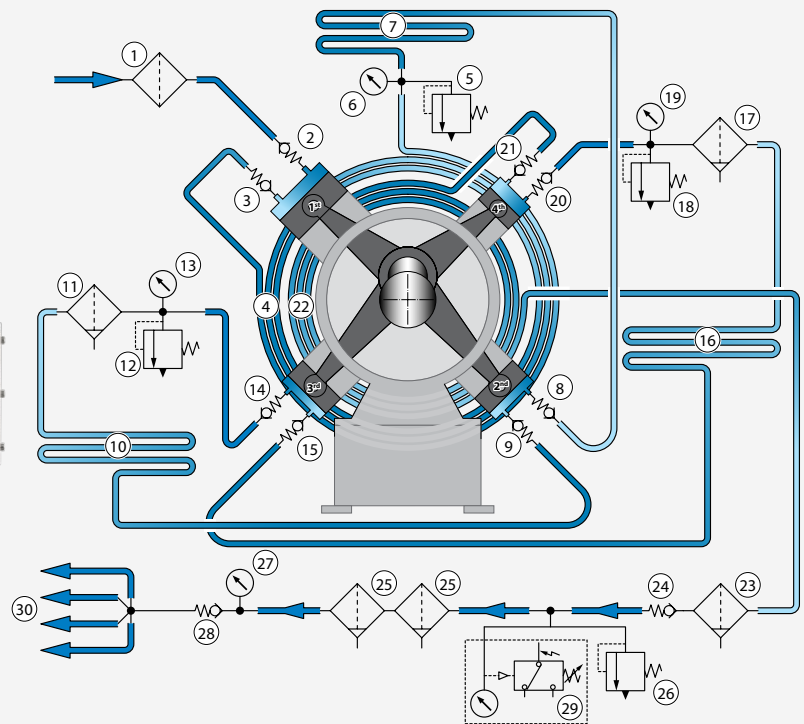
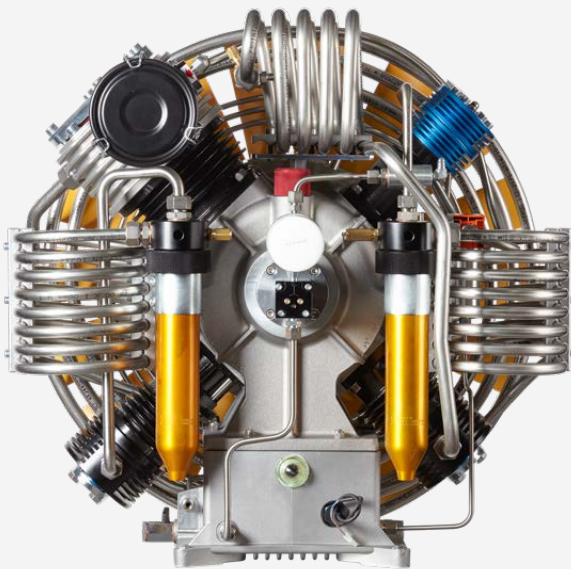
MCH 36 ET THREE-PHASE ELECTRIC MOTOR

DESCRIPTION

The OPEN series has been conceived to meet the needs of very intensive situations, large filling capacities, but in warm, poorly ventilated environments or tropical countries. Equipped with 4 front filling connections for high pressure hoses (from 232 to 420 bar), a control panel and an electrical display. Each one is also equipped with a three-phase electric motor and powerful pumping units (MCH 22, MCH 30, MCH 36 and MCH 45 depending on the specific model). The pumping unit placed in the rear part of the structure guarantees a better cooling cycle. In order to prolong the life of the filters external dryers, RF 500 and RF 1000, can be added. Optional extras include: electronic touch screen display, Presec for filter saturation control and remote filling panel.



MCH 22-30-36-45 PUMPING UNIT



- | | | |
|--------------------------------------|--------------------------------------|--|
| 1 Intake filter | 11 Condensate separator | 21 Outlet valve 4th stage |
| 2 Intake valve 1st stage | 12 Safety valve 2nd stage | 22 Final cooling pipe |
| 3 Outlet valve 1st stage | 13 Pressure gauge 2nd stage | 23 Condensate separator |
| 4 Cooling pipe 1st-2nd stage | 14 Intake valve 3rd stage | 24 Non return valve |
| 5 Safety valve 1st stage | 15 Outlet valve 3rd stage | 25 Active carbon air filter/molecular sieve |
| 6 Pressure gauge 1st stage | 16 Cooling pipe 3rd-4th stage | 26 Safety valve |
| 7 Cooling pipe 1st-2nd stage | 17 Condensate separator | 27 Pressure gauge 4th stage |
| 8 Intake valve 2nd stage | 18 Safety valve 3rd stage | 28 Pressure maintenance valve |
| 9 Outlet valve 2nd stage | 19 Pressure gauge 3rd stage | 29 Pressure switch |
| 10 Cooling pipe 2nd-3rd stage | 20 Intake valve 4th stage | 30 Flex hoses |

TECHNICAL DATA

| | MCH 22 | MCH 30 | MCH 36 | MCH 45 |
|---------------------------|--|--|--|--|
| DRIVEN BY | THREE-PHASE ELECTRIC MOTOR | THREE-PHASE ELECTRIC MOTOR | THREE-PHASE ELECTRIC MOTOR | THREE-PHASE ELECTRIC MOTOR |
| ENGINE POWER | 7.5 kW - 10 Hp | 9 kW - 12.5 Hp | 11 kW - 15 Hp | 15 kW - 20 Hp |
| CHARGING RATE | 450 l/min - 27 m³/h 15.9 CFM FAD | 550 l/min - 33 m³/h 19.4 CFM FAD | 650 l/min - 39 m³/h 22.9 CFM FAD | 750 l/min - 45 m³/h 26.9 CFM FAD |
| FILLING TIME* | 5 min. | 4 min. | 3 min. | 2,5 min. |
| WORKING PRESSURE | 232 - 330 - 420 bar 3365 - 4786 - 6091 psig | 232 - 330 - 420 bar 3365 - 4786 - 6091 psig | 232 - 330 - 420 bar 3365 - 4786 - 6091 psig | 232 - 330 - 420 bar 3365 - 4786 - 6091 psig |
| NET WEIGHT APPROX. | 365 kg - 805 lb | 375 kg - 827 lb | 375 kg - 827 lb | 375 kg - 827 lb |
| NOISE | 78 dB | 78 dB | 78 dB | 78 dB |

*Filling time cylinder 10 l-0/200 bar (measured by filling cylinder from 0 to 200 bar ±5%)

STANDARD



DRV 232 bar - 3365 psig
DRV 300 bar - 4351 psig
2 valves DRV (Pag. 59)



Filling hoses
2 filling hoses 1.2 m - 3.9 ft length



Automatic condensate drain



Pressure gauges
interstage control



Double hyperfilter filtration
PED certificated
(Pag. 61)



Pressure switch
auto shut off



Thermostat
Cabin temperature
thermostat/auto shut off



Phase controller
that prohibits reverse rotation



Oil level
switch/auto shut off

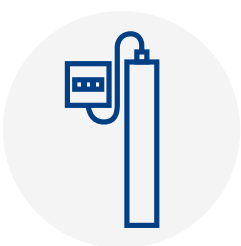


Oil pump

OPTIONAL



Touch screen
display



Presec
visual filtration saturation indicator
(Pag. 49)



Dryer
(Pag. 48)



Remote filling panels
(Pag. 58)

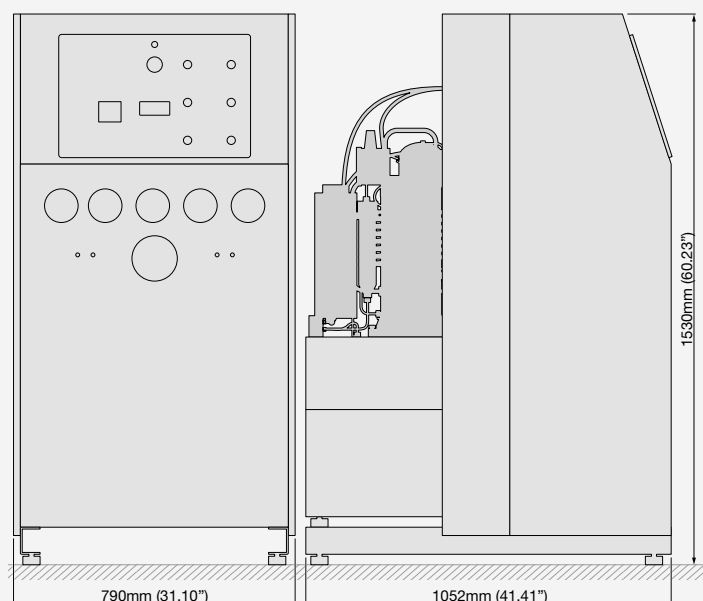


Filling hoses
length: 1.5 - 2 - 3 - 4 - 5 - 8 - 10 m
4.9 - 6.5 - 9.8 - 13.1 - 16.4 - 26.2 - 32.8 ft

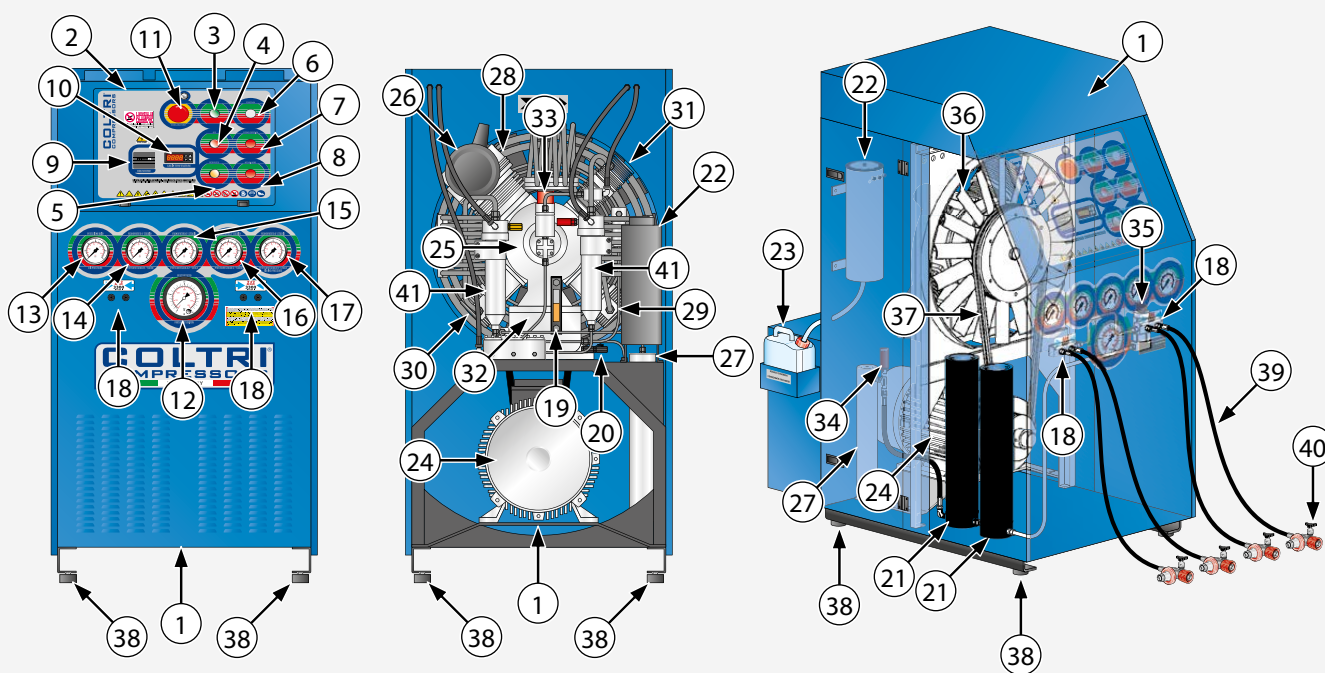
SAM

SAM Multigas

DIMENSIONS



MACHINE PARTS



- | | | |
|--|---|---------------------------------|
| 1 Frame | 15 2nd stage pressure gauge | 28 1st stage |
| 2 Control pannel | 16 3rd stage pressure gauge | 29 2nd stage |
| 3 ON pushbutton | 17 4th stage pressure gauge/ working pressure | 30 3rd stage |
| 4 Stop pushbutton | 18 Refill hoses connection | 31 4th stage |
| 5 Condensate discharge pushbutton | 19 Oil level | 32 Monobloc |
| 6 Power indicator light | 20 Oil discharge valves | 33 Oil filler plug |
| 7 Direction of rotation indicator light | 21 Purifier filter | 34 Safety valve |
| 8 Oil level warning light | 22 Condensate collection container | 35 Maintenance valve |
| 9 Hour counter | 23 Condensate collection can | 36 Cooling fan |
| 10 Cabinet interior / cooling air temperature | 24 Motor | 37 Belt |
| 11 Emergency pushbutton | 25 Compressor | 38 Anti-vibration device |
| 12 Automatic shutdown pressure switch | 26 Air filter | 39 Refill hose |
| 13 Oil pressure gauge | 27 Final condensate separator | 40 Refill valves |
| 14 1st stage pressure gauge | | 41 Condensate separator |